

Fire and Emergency

Preparedness and Response

Protect property. Save Lives. These are principle roles of any local government jurisdiction. Fire and emergency response personnel need accurate, timely access to Built Environment information to meet citizens' needs.



Best-in-Class Workflow

The market leader, Avolve Software has implemented ProjectDox in over 120 jurisdictions throughout North America. Our Best-in-Class workflows represent the consolidation and refinement of tens of thousands of customer interaction, design and development hours spent addressing customers' electronic plan review requirements.



ProjectDox is currently at work in dozens of jurisdictions nationwide performing reviews by various departments including fire-related views.

Prepare and Respond with Accurate Information

Paper-based drawings are at risk in the event of a fire, flood, hurricane or other unforeseen disaster. They are also highly vulnerable to loss or theft. The ability to back-up and secure your electronic drawings and data in multiple locations is a key benefit of using the ProjectDox ePlan solution; you will be protecting valuable information for use in critical future situations.

Avolve Software builds information and process bridges for built environment data, eliminating barriers among industries, agencies, departments and data silos.

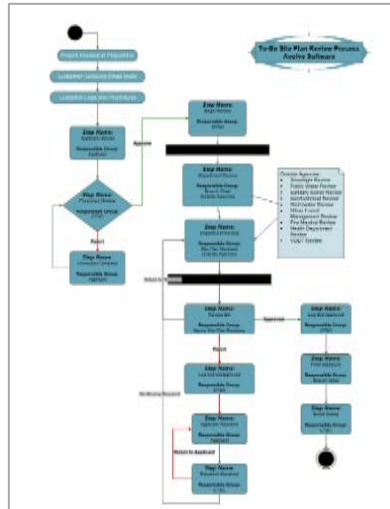
Our solutions utilize administrative, document management, GIS and financial systems to enable collaboration on structured and unstructured content.

What is a Best-in-Class Workflow?

Avolve offers pre-configured Best-in-Class workflows for Planning, Building, and Fire Safety that are straightforward to implement, making your organization more productive, more quickly.



Workflows Automate your Business Processes



What comprises a business process? A business process is typically a sequence of interrelated activities completed by individuals or systems inside and even outside the organization. ProjectDox automates these activities and the information flow throughout the customer's business process. We call these 'workflows' and they represent the heartbeat of the ProjectDox system. ProjectDox comes with an advanced set of tools – eForms, project templates, a workflow designer, checklists, an advanced folder structure, and others – that are pre-configured and comprise our Best-in-Class workflows.

Public Safety & Emergency Response

ProjectDox allows emergency response agencies to electronically access, view, and mark-up building plans for any building in your jurisdiction. These pre-reviewed plans can then be accessed instantly should an emergency arise.

State and local government emergency response agencies can benefit from ProjectDox in the following ways.

- Pre-plan emergency response with the aid of fully marked-up drawings
- Identify and highlight key items such as Gas and Electric Shut-offs, Stand Pipes, Master Elevator Controls, Security Controls, and all Access Points
- Mark and log the location of all stored hazardous materials
- Access plans wirelessly for both inspection and emergency response
- Centralize information access and distribution; Link to GIS, Asset Management and Land Management for robust information views
- Enable simultaneous access to identical plan sets

When emergencies arise, having an easy-to-understand action plan is essential. An action plan that can be shared between multiple response teams as well as the command center is more coordinated and efficient, and increases the capability to save valuable property and human life



Avolve Software Corporation
4835 E. Cactus Road Suite 420
Scottsdale, AZ 85254-3546
602.714.9774 | f 602.923.3544
www.avolvesoftware.com

©2014 Avolve Software Corporation. All rights reserved. ProjectDox is a registered trademark.

ProjectDox can be integrated with other government software and e-permitting products. Talk to your Avolve Software sales representative for details.